



www.automaterp.com

ERP Software

ERP For Small & Medium Enterprises

AUTOMAT[™]

The most effective and efficient way to run your business.

AUTOMAT ERP - INTRODUCTION

- A SIMPLE YET COMPREHENSIVE BUSINESS TOOL FOR SMALL AND MEDIUM ENTERPRISES (SMEs)
 - Empowers Business to grow fast and profitable.
 - Apt for Business like Trading, Distribution, Production & Manufacturing firms.
 - Integration provision with other Enterprise Solutions.
- **Advantages of ERP**
 - ✓ Eliminate costs & inefficiencies
 - ✓ Improve operational efficiency
 - ✓ Enhance productivity, customer satisfaction flexibility and control
 - ✓ Improve communication and collaboration
 - ✓ Leverage IT infrastructure and information assets

AUTOMAT ERP - DIFFERENTIATORS

1. The most comprehensive ERP software for MSME (Micro, Small & Medium Enterprises)
2. Available in Browser or Desktop Application or Cloud Model
3. Modular Sales – Start with required modules and add-up as required
4. *An adaptable ERP software for growing business needs*
5. *ERP as your software – than as a product*
6. Low Cost Ownership & Simple Licensing Model
7. Single Vendor Solution – Database, Server, VPN Router, Barcode Printer / Scanner...

AUTOMAT ERP - MODULES

SUITES	MODULES				
Finance	Accounts	Banking	Taxations	Costing	
Purchase	Purchase Order	Procurement	Comparison	Import	
Sales	Marketing	Order Process	Pricing	Opportunity	Export
Inventory	Product	Stores	Logistics	<i>Internal Branch Order</i>	
Manufacturing	Production	Process	Sub Contract	Quality	

EDITIONS

DESKTOP APPLICATION:

AUTOMAT ERP BUSINESS
AUTOMAT ERP PROFESSIONAL

BROWSER APPLICATION:

AUTOMAT ERP CLOUD (SAAS MODEL)
AUTOMAT ERP ENTERPRISE

AUTOMAT ERP – KEY FUNCTIONALITY

Finance	Purchase	Sales	Inventory	Manufacturing
<ul style="list-style-type: none"> • budget and analysis • general ledger and journal entries • accounts payable and receivable • debit & credit note • reconcile financial accounts • define & manage tax parameters • forecast and control of banking • petty cash management, • financial statement and reporting • cost accounting 	<ul style="list-style-type: none"> • organize & maintain detailed vendor information • maintain a bid matrix, request for quote and comparison • purchase orders • manage procurement & inspect vendor shipments • GRN (goods receipt note) & returns • manage sub contracting job • import management • forecasting & MRP (material requirement planning) 	<ul style="list-style-type: none"> • inquiry, quote, follow-up & negotiation • sales orders • proforma invoices, sales invoices & returns • opportunity management • maintain price matrices • price calculation tool • ship finished product • manage Export document and transactions 	<ul style="list-style-type: none"> • items, products & BOM • manage detail inventory records & stock movement • maintain optimal inventory levels • simplify inventory transactions • ship and receive goods • track material location / lot information • track serial numbers, utilize bar coding, & perform cycle counting and physical inventories. • define & manage assets • Internal branch or warehouse transfer 	<ul style="list-style-type: none"> • MRP II (manufacturing resource planning) • production order • batch management • plan and schedule production with process • manage material and equipment capacity • track & manage outsourcing / sub contract with or without raw material • quality: Inspect incoming & outgoing , on process • excise trading & manufacturing with statutory reports
<ul style="list-style-type: none"> • perform drill-down analysis • multicurrency support 	<ul style="list-style-type: none"> • maintain a complete history of activities • attachment provision for transactions 	<ul style="list-style-type: none"> • follow ups with individual dashboard • provision to duplicate & revise the transactions 	<ul style="list-style-type: none"> • transactions analysis & strike rate reports • user privilege based access 	<ul style="list-style-type: none"> • automate frequently performed tasks • provision to export data to xls

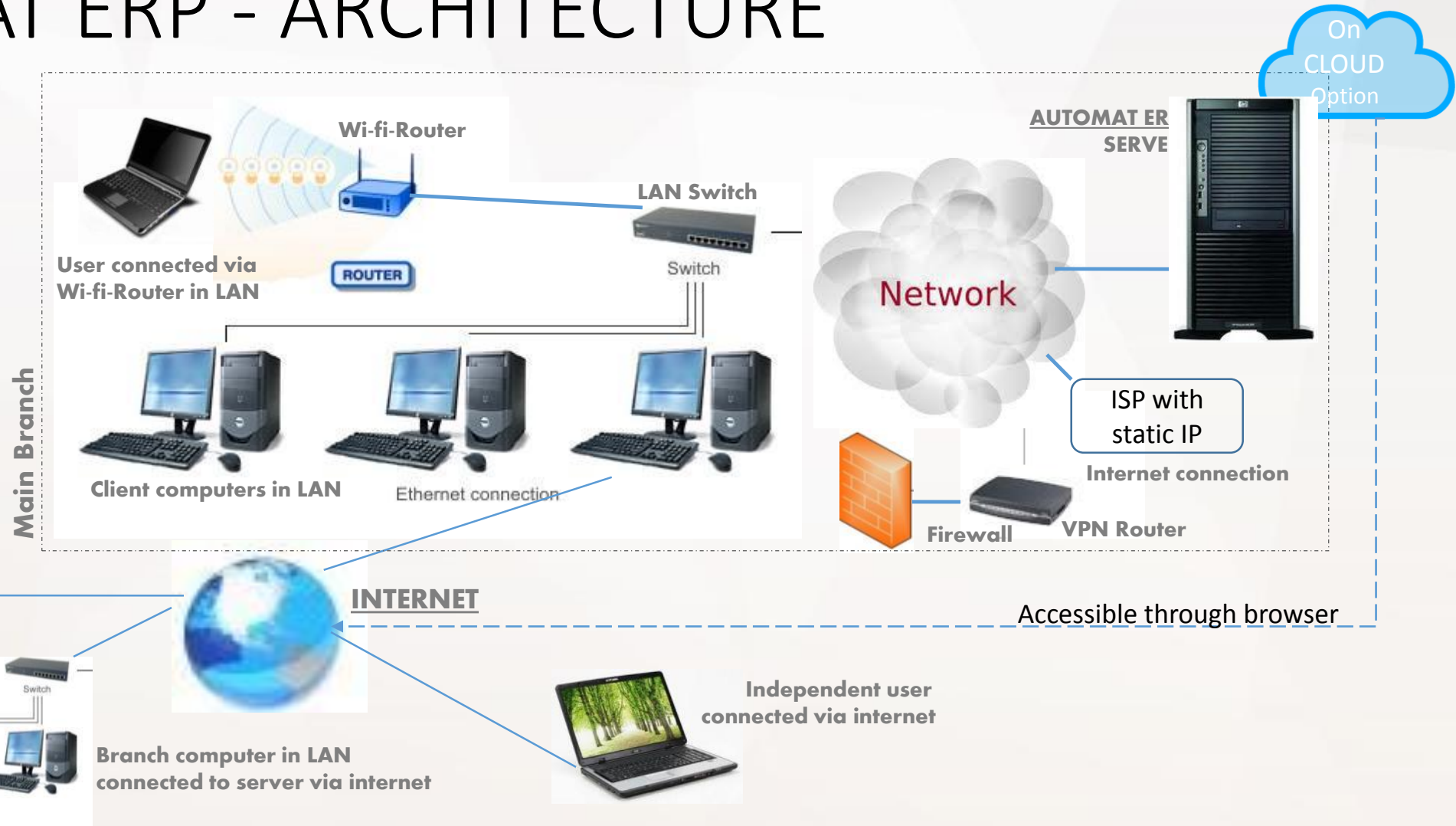
AUTOMAT ERP - IMPLEMENTATION



- RAPID Implementation model
- Remote installation & support model
- Virtual Class Room & Hands on Training
- Detailed Documentation
- Access to Customer Support Website
- Existing data migration & support
- Works on a minimum configuration computer #
- Accessible on Mobile Devices *

* Browser Version

AUTOMAT ERP - ARCHITECTURE



Legend: LAN – Local Area Network; ISP – Internet Service Provider;

AUTOMAT ERP - BACKGROUND

- A Technological Company – EBSL Group.
- Specialized in Trading and Manufacturing Solutions.
- Consulting Based Approach.
- Worked for Diverse Industries.



Microsoft

AUTOMAT™

SMART BUILDINGS
www.automat.co.in

SMART HOME
www.homeautomat.in

CLOUD SOLUTIONS
www.automatcloud.com

SME ERP
www.automaterp.com

Since:
16 years

Registered office:
Bangalore

Presence:
India, Singapore

Clients:
500+ across Continents

Mission
deliver benefits.

Vision
Proficient & Reliable Partner.

Thank You

www.automat.co.in | www.automaterp.com

info@automat.co.in, +91 80 41127529

Dr. RM Sudhakar, Ph.D.

+91 98867 95676

Chat: [rm.sudhakar](#) (skype / gtalk)

EBSL Group, AUTOMAT,

No. 2453, 2nd Floor, 9 Main, 17 E Cross, BSK
2 Stage, Bangalore - 560070, INDIA

Look forward for
the opportunity
to work with you.